

The Richmond Building, Clifton

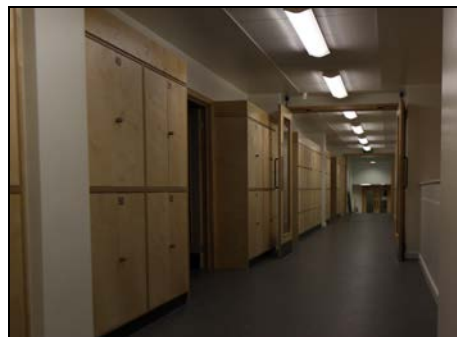
The University is investing some £30m to put this building back into good repair and make it more sustainable and fit for the future. The building is being transformed to prepare it for a long future providing excellent facilities for students, staff and visitors.

New spaces have been created for existing activities, including the Students' Union, Anson Rooms and swimming pool. New facilities include the Centre for English Language and Foundation Studies.

Phase 1 was completed in February 2013, and internal works on the North Block are now complete. Phase 2 works on the South Block are due to be completed in Autumn 2014.



The Richmond Building - a vibrant, welcoming and sustainable facility for university students, staff and visitors



Newly refurbished spaces in the North Block including the Anson Rooms, the upper ground floor, and the dance studio

Works for December into January include:

North Block

- Works on the North Block are close to completion, with some work taking place in late December/early January to sand and varnish the floors to the Anson Rooms.

South Block

- From January 2014, works on the building will be focussed predominantly on the south block and upper floors of the link block.
- Galliford Try will commence in early January by erecting new site hoardings and scaffolds on Richmond Hill Avenue and Gordon Road.
- Refurbishing work will commence on the Porters Lodge at Gordon Road entrance. The lodge is likely to be rehoused during the period.
- The existing spiral stair to the car park is scheduled to be demolished in mid-January over a few days.
- Internal fit out work will start in January 2014 and is scheduled to continue until Christmas 2014.
- Deliveries and skip changes will continue approximately every 2 days.

Site working hours

Normal hours of work are Monday - Friday 8am - 6pm, and the aim is to avoid weekend working. Where weekend working is required, times are limited to Saturday 8.00am-1.00pm with noise kept to a minimum, and as a rule no external noise should be audible beyond the site boundary.

Working hours over the Christmas and New Year period: The main site will close down for Christmas from Friday 20th December. Work will recommence on site from Monday 30 December excepting New Year's Day.

For out of hours concerns contact: **University Porters on 0117 331 8506**

For specific site/building issues contact: **RIS 07826 066 641**

For other queries relating to the development programme or further information on the project:
AVRIL BAKER CONSULTANCY 0117 977 2002 or email info@abc-pr.co.uk